

Linea Porzellana



TREVISO LI-PV-3

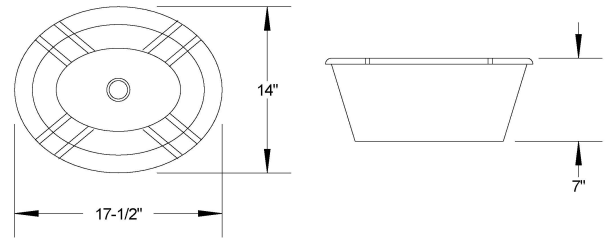
WWW.LINEAPORZELLANA.COM

For centuries porcelain has been used in creating stylish kitchen and bathroom fixtures that can be traced back to ancient times. Past and present they offer the same warmth, color and brilliance as our forefathers enjoyed. The construction of these sinks is an art in itself. First they are molded, poured and left to dry at a perfect temperature as to not affect the shape. Then carefully unveiled from the mold and sponged while slightly moist to assure a smooth surface. The sinks are left to dry in a controlled environment, painted, baked, enameled and baked again. Due to this artesian procedure no two sinks are ever identical offering you a unique and delicate piece of workmanship to last a lifetime. Thank you again and enjoy your new "Linea Porzellana" sink by C-TECH-I.



FEATURES

| | |
|-------------------|--|
| Model # | LI-PV-3 |
| Description | VANITY SINK |
| Material | PORCELAIN |
| Color | AVAILABLE IN 3 COLORS |
| Mounting options | DROP-IN |
| Finish | ENAMELED |
| Warranty | 3 YEARS |
| Overflow | YES |
| Drain size | 1 5/8", STANDARD USA, CA AND EUROPE SIZE |
| Certifications | CAN/CSA-B45/ANSI-A112.19/ANSI-Z124/MASS |
| FGP Compliant | YES |
| Fits cabinet size | MADE FOR CABINETS 24" AND LARGER |



INCLUSIONS:

Your Linea Porzellana sink includes the following accessories,
Paper template for cut-out Mounting hardware

AVAILABLE IN WHITE - ALMOND - BLACK



RESOURCES:

| | |
|---------------------------|--|
| Installation instructions | www.specs.ctechi.com/sinkinstall.pdf |
| Cleaning instructions | www.specs.ctechi.com/cleaning.pdf |
| Warranty information | www.specs.ctechi.com/warranty.pdf |
| DXF file | www.specs.ctechi.com/li-pv-3.dxf |

For your protection and to insure the highest quality and standards, all C-TECH-I products meet or exceed one or more of the regulatory certification marks for the USA, Canada and Europe.

